

# Syringe Kits and Accessory

## I Type Connection Tube for DSA Injector ( Pressure limit: 1200 PSI )

Product code	7.20.01.0034
Size	1200mm
Standard configuration	1 piece of 1200 mm transparent high-pressure connection tube ( With 1 Luer taper )



## I Type Connection Tube ( Pressure limit: 300 PSI )

Product code	7.20.03.0018	7.20.03.0017
Size	1500mm	1500mm
Standard configuration	1 piece of spiral connection tube( Without one-way valve )	1 piece of spiral connection tube( With one-way valve )



## Y Type Connection Tube ( Pressure limit: 300 PSI )

Product code	7.20.03.0022	7.20.03.0019
Size	1500mm	1500mm
Standard configuration	1 piece of spiral connection tube( With 1 one-way valve )	1 piece of spiral connection tube( With 2 one-way valve )



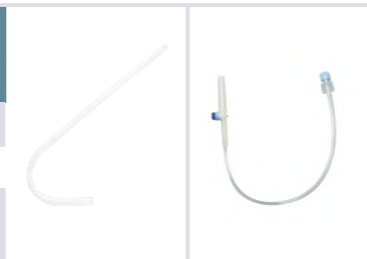
## T Type Connection Tube ( Pressure limit: 300 PSI )

Product code	7.20.03.0020	7.20.03.0021
Size	1500mm	1500mm
Standard configuration	1 piece of spiral connection tube( With 1 one-way valve )	1 piece of spiral connection tube ( With 2 one-way valve )



## Fill Tube

Product code	7.20.03.0028	7.20.03.0029
Size	100mm	100mm
Standard configuration	1 piece of 500 mm J type filltube	1 connection tube (Fill tube) 1 end with long spike



**Contrast Media Injectors**  
( For CT/MRI/DSA Series )

Sino Medical-Device Technology Co., Ltd.

Add: 6th Floor, Building 15, No.1008, Songbai Road, Nanshan District, Shenzhen, P.R. China

Tel: +86 755 26755692 Fax: +86 755 26755687 Zip: 518055

Email: info@sinomdt.com

[www.sinomdt.com](http://www.sinomdt.com) | Hotline: (+86)4008 860121

This document is for reference only, products update without notice. (V3.1)



Build Quality Build Reliability

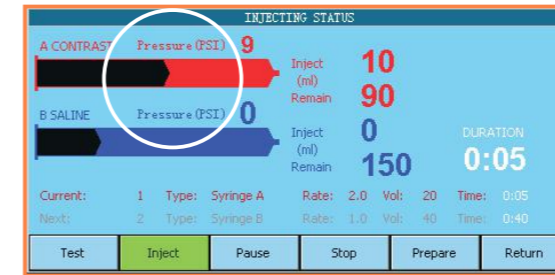
# SinoPower series

## | CT Injectors

# SinoPower



Unique design of **"Direct Pressure Sensor"** protect patient  
( Patent No.: ZL200920129005.9 )



- Real-time injection pressure display
- When the actual pressure exceeds the limit, the system will automatically stop injection and give alarm
- Effectively reduce the swelling caused by vascular rupture (See the application case)

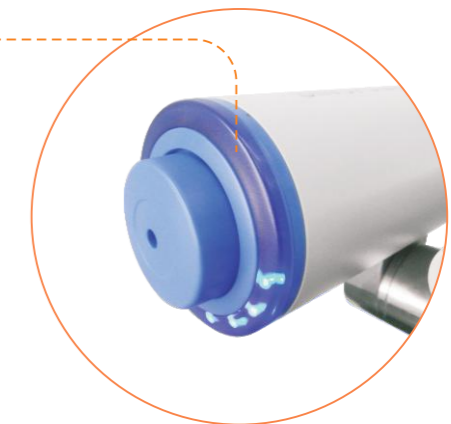
Local & remote real **color LCD** touch screen display



- Remote console: able to edit the protocols and execution of injection, synchronous display of all operations of the local console
- Local console: all actions can be performed, and synchronous display of all operations of the remote console.

**LED rotation indicator**

- LED clockwise rotation show the drug suction process
- LED counter clockwise rotation show the injection process



SinoPower-D

SinoPower-S



## Immediately stop the injection

- For the emergency, immediately stop injecting and prevent damage

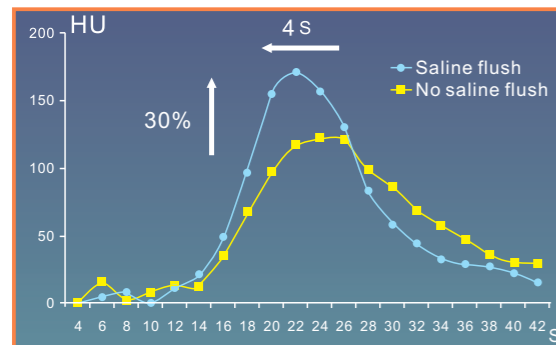


## Large handhold and large wheel

- Easy to move and easy to fix the injector



## Dual syringe injection, support saline flush function (SinoPower-D)



- Saline flush reduce the fake image and get better enhancement, improve the image quality

## Syringe Maintainer 35°C ± 5°C (≥1hr)

- Maintain the temperature of the contrast media and saline, making the injection process more comfortable



## Specifications of CT High-Pressure Injector

Model	SinoPower-S	SinoPower-D
Syringe	Single syringe	Dual syringe
Size of syringe	200mL sterile syringe for high-pressure injector	
Pressure limit	50 Psi ~300Psi	
Flow rate	0.1ml/s~10.0ml/s Step: 0.1mL/s	
Injection volume	0.1mL ~ Volume of syringe	
Injection delay	0~600s	
Injection phases	1~8 phases	
Injection protocol	Up to 120 protocols	
Control console	7 inch real color touch LCD for both local and remote	
Syringe heater	35°C ± 5°C ( ≥40min )	

## Patented technology to protect patient

-Application of SinoPower High-pressure Injector

Patented technology of 'Direct Pressure Sensor' to monitor real-time injection pressure, the injector will give alarm and stop injection when the pressure is abnormal, effectively reduce the swelling caused by vascular rupture to protect patient

### The application of SinoPower-D High-pressure Injector in Sun Yat-sen Memorial Hospital

The Sun Yat-sen Memorial Hospital is an internationally well-known hospital with long history. In early February 2009, a SinoPower-D CT Injector was brought into use in the radiology department working with Siemens Sensation 64 CT . After being put in use, the new equipment has shown outstanding performance. The docoters and nurses responsible for on-site operation highly praise it: " SinoPower CT Injector is very safe, convenient and stable in use, having excellent clinical performance!"



### Unique and patented technology of 'Direct Pressure Sensor', avoid medical accident caused by leakage of liquid

Enhanced Scan Injection has some risks in clinical use, if the needle hole moves away from blood vessel or the blood vessel is ruptured, the liquid will percolate through the skin to cause severe swelling and even fester. Fortunately, the SinoPower-D High can perceive real-time injection pressure, once the pressure exceeds limit extremely, the injector will give alarm and stop injection immediately to greatly reduce swelling and avoid accident.

Oneday, when making enhanced scan on a girl from Foshan, liquid leakage and swelling happened due to the needle was a little away from the blood vessel, as the girl's blood vessel is a little bit narrow. SinoPower-D High injector successfully detected abnormal pressure and stooped injection immediately, a medical accident was avoided. Afterwards, the on-site doctor said: "Thanks to the machine, an accident is avoided in time, otherwise the consequence will be terrible."

### Powerful functions and stable working

This CT department is very busy, more than 80 enhanced scan will be done per day sometime . In the peak time, there is case every 4-5 minutes, which covers scan of ordinary organs and brain. With so frequent use, SinoPower-D injector still works well all the time. During the 7 years after being put in use, several tens of thousands injections were finished without any problems, even under so intensive, long time and continuous use.

# SinoAngio series DSA Injectors

# SinoAngio



## Perfect display quality



- 12.1 inch color LCD control display, large visual angle, graphic interface



## Specifications of DSA High-Pressure Injector

Model	SinoAngio-1200	SinoAngio-600
Syringe	Single syringe	
Size of syringe	150mL sterile syringe	
Injection volume	0.1mL ~ Volume of syringe	
Injection delay	0~600 s	
Injection phases	1~8 phases	
Injection protocol	Up to 120 protocols	
Syringe heater	35°C±5°C ( ≥40min )	
Tilt lockout	Rotate head to arm-down, minimize risk of air embolish	
Control console	12.1 inch real color touch LCD for both local and remote (Remote is optional )	
ISI	Synchronization of injection delay and scanning delay	
Pressure limit	100 ~1200 Psi	100 ~600 Psi
Flow rate	0.1mL/s~50.0mL/s Step: 0.1mL/s for 0.1mL/s≤X≤10.0mL/s 1mL/s for 10mL/s<X≤50.0mL/s	0.1mL/s~25.0mL/s Step: 0.1mL/s for 0.1mL/s≤X≤10.0mL/s 1mL/s for 10mL/s<X≤25.0mL/s

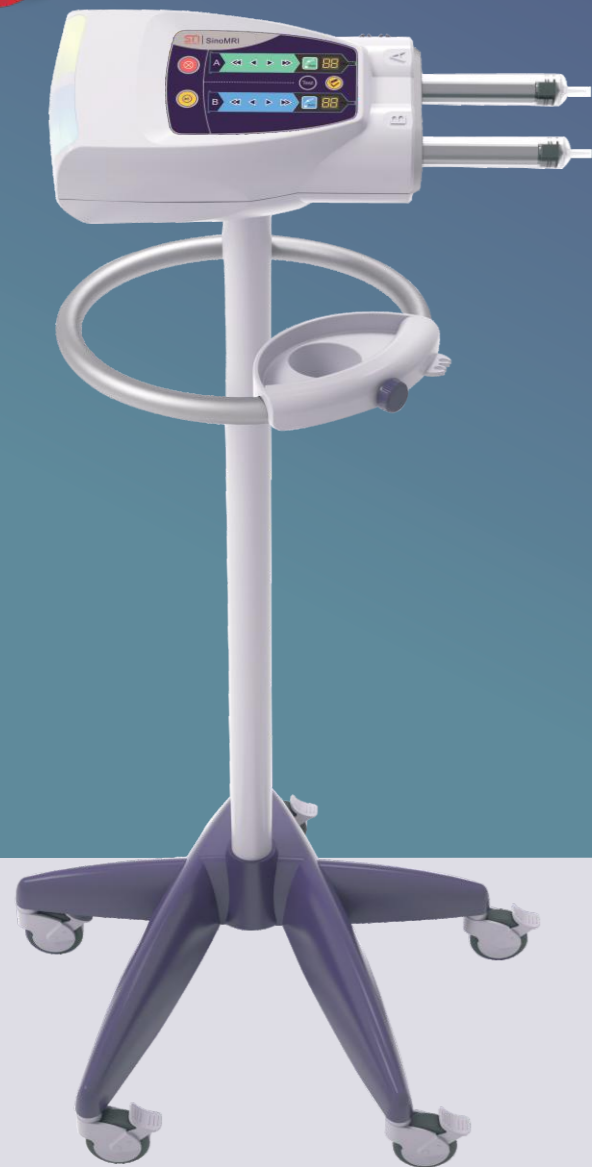
SinoAngio-600/1200

# SinoMRI series

## | MRI Injectors

# SinoMRI

NEW



SinoMRI



### Unique *display* function

- Injection head digital display the volume of contrast media



### LED *working status* light

- LED shows dark green or dark blue, means the system is in standby state
- LED shows high light green or high light blue, means the system is in ready state
- LED shows blink high light green or blink high light blue, means the system is in injection state
- LED shows blink red, means the system is in alarm



### Specifications of MRI High-Pressure-Injector

Mode	SinoMRI-A/AP	SinoMRI-B/BP
Syringe	Double	
Size of Syringe	65mL sterile syringe	
Injection Volume	0.1mL~Volume of Syringe	
Delay	0~900s	
Pause	0~900s	
Injection phases	1-8phases	
Injection protocol	up to120protocols	
Pressure limit	50~300psi 1psi increments	
KVO	0.1ml Pulsed every20~90s 1s increments default 30s	
Flow Rate	0.1ml/s~10ml/s	0.1ml/s increments

# Syringes for High Pressure Injectors

## Syringes for CT Injectors

			
200ml	200ml	200ml	100ml
Product code: 7.20.01.0058	Product code: 7.20.01.0059(S) 7.20.01.0060(D)	Product code: 7.20.01.0062(S) 7.20.01.0061(D)	Product code: 7.20.01.0053
<b>Application:</b> Medrad 1.MCT & MCT plus CT 2.Vistron CT 3.En Vision CT	<b>Application:</b> Medrad 1.Single stellant 2.Double stellant	<b>Application:</b> EZEM 1.Single Empower 2.Double Empower	<b>Application:</b> Nemoto A-60&A-25
<b>Standard configuration:</b> 1-200ml Syringe 1-1500mm Connecting Tube 1-1500mm Connecting Tube 1-Fill Tube	<b>Single Standard configuration:</b> 1-200ml Syringe 1-1500mm Connecting Tube 1-Fill Tube  <b>Double Standard configuration:</b> 2-200ml Syringe 1-1500mm Connecting Tube 2-Fill Tube	<b>Single Standard configuration:</b> 1-200ml Syringe 1-1500mm Connecting Tube 1-Fill Tube  <b>Double Standard configuration:</b> 2-200ml Syringe 1-1500mm Connecting Tube 2-Fill Tube	<b>Single Standard configuration:</b> 1-100ml Syringe 1-1500mm Connecting Tube 1-Fill Tube

			
200ml	200ml	200ml	200ml
Product code: 7.20.01.0063	Product code: 7.20.01.0064(HP) 7.20.01.0065(DP)	Product code: 7.20.01.0066(S) 7.20.01.0067(D)	Product code: 7.20.934651(S) 7.20.934661(D)
<b>Application:</b> Nemoto A-60	<b>Application:</b> Medtron 1.Accutron HP 2.Accutron DP	<b>Application:</b> Liebel-Flarsheim CT9000&CT9000ADV	<b>Application:</b> Sino Medical-Device Technology Co., Ltd. 1.Sinopower-S 2.Sinopower-D
<b>Single Standard configuration:</b> 1-200ml Syringe 1-1500mm Connecting Tube 1-Fill Tube	<b>HP Standard configuration:</b> 1-200ml Syringe 1-1500mm Connecting Tube 1-Fill Tube  <b>DP Standard configuration:</b> 2-200ml Syringe 1-Connecting Tube 2-Fill Tube	<b>Single Standard configuration:</b> 1-200ml Syringe 1-1500mm Connecting Tube 1-Fill Tube  <b>Double Standard configuration:</b> 2-200ml Syringe 1-Connecting Tube 2-Fill Tube	<b>Single Standard configuration:</b> 1-200ml Syringe 1-1500mm Connecting Tube 1-Fill Tube  <b>Double Standard configuration:</b> 2-200ml Syringe 1-Connecting Tube 2-Fill Tube

## Syringes for DSA Injectors

			
150ml	125ml	150ml	130ml
Product code: 7.20.01.0033	Product code: 7.20.01.0068	Product code: 7.20.01.0069	Product code: 7.20.01.0070
<b>Application:</b> Medrad Mark V	<b>Application:</b> Nemoto 120S	<b>Application:</b> Liebel-flarsheim Lilumena	<b>Application:</b> Medrad Mark III&MarkVI
<b>Standard configuration:</b> 1-150ml Syringe 1-Fill Tube	<b>Standard configuration:</b> 1-125ml Syringe 1-Fill Tube	<b>Standard configuration:</b> 1-150ml Syringe 1-Fill Tube	<b>Standard configuration:</b> 1-130ml Syringe 1-Fill Tube

## Syringes for MRI Injectors

			
65ml	65m/115ml	60ml	60ml
Product code: 7.20.01.0071	Product code: 7.20.01.0072	Product code: 7.20.01.0032	Product code: 7.20.01.0038
<b>Application:</b> Sino Medical-Device Technology Co., Ltd. SinoMRI-A/AP SinoMRI-B/BP	<b>Application:</b> Medrad Spectris&Solaris <b>Spectris Standard configuration:</b> 2-65ml Syringe 1-Connecting Tube 2-Fill Tube <b>Solaris Standard configuration:</b> 1-65ml Syringe 1-115ml Syringe 1-Connecting Tube 2-Fill Tube	<b>Application:</b> Liebel-flarsheim Optostar LE,Elite	<b>Application:</b> Nemoto Sonic shot 50
<b>Standard configuration:</b> 2-65ml Syringe 1-Connecting Tube 2-Fill Tube	<b>Standard configuration:</b> 2-60ml Syringe 1-Connecting Tube 2-Fill Tube	<b>Standard configuration:</b> 2-60ml Syringe 1-Connecting Tube 1-Fill Tube	<b>Standard configuration:</b> 2-60ml Syringe 1-Connecting Tube 1-Fill Tube